



vantage

Early Head Start

ANNUAL
REPORT

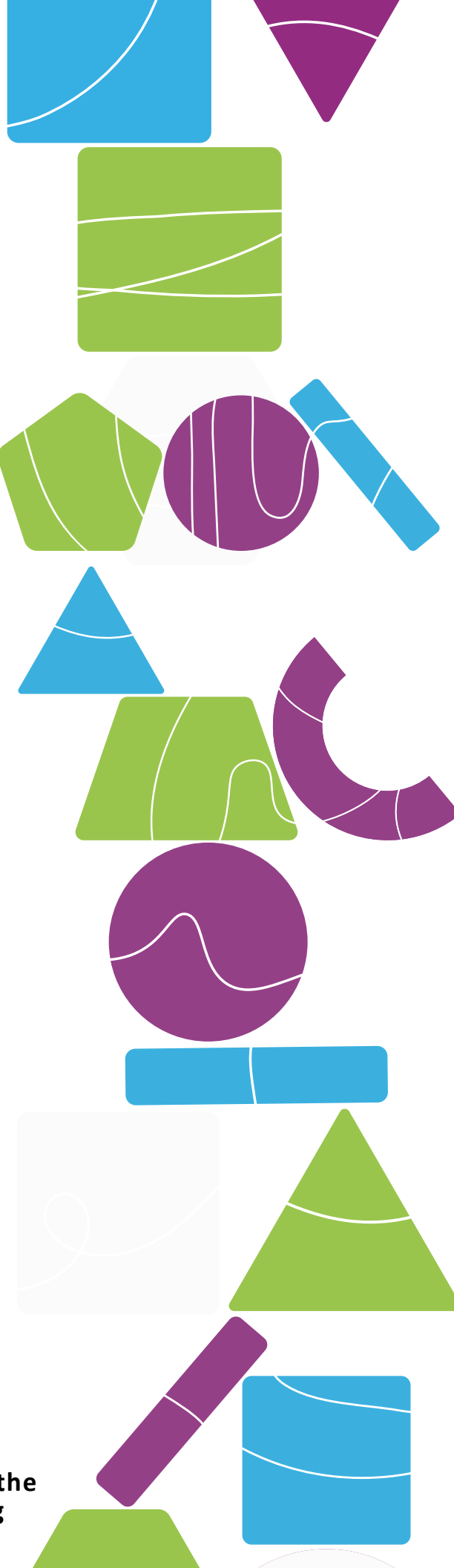
20
24



vantage

Discover. Develop. Impact.

This report is available to the public at ddivantage.org



2

**Letter from Program
Coordinator**

3

Enrollment

4

Health Services

5

EHS-Child Care Partnerships
(EHS-CCP)

School Readiness

6

EHS-Child Care
Partnerships
Attendance

7

EHS Home-based
School Readiness

8-9

EHS Home-based
**Parent Activities &
Parent Engagement**

10

Fiscal

Total Funded Enrollment:

- **148 Home-based**
- **66 Child Care Partnerships**

DDI Vantage Early Head Start (EHS) delivers comprehensive early education services to income-eligible families in Salt Lake, and Tooele counties.

EHS is tailored to serve pregnant woman, infants and toddlers. Children are able to participate in the program until the age of three. Children in the EHS Program are supported with cognitive, social emotional, and physical development throughout their learning experience.

Early Head Start Child Care Partnerships (EHS-CCP) is an effort to expand high-quality education and early learning to children in a child care setting.

**Play is the Highest
Form of Research.**

-Albert Einstein

Letter from EHS Program Coordinator

This Annual Report provides information on what our program in both our Home-based and Early Head Start Child Care Partnerships (EHS-CCP) program options has accomplished over the past year. It is important that taxpayers, stakeholders, and the community have an opportunity to see what we are doing on a year-to-year basis. This year our DDI Vantage organization reached 53 years of providing unparalleled services to babies, toddlers, children, adults, and families in the community. At the same time, our Early Head Start program completed its 20th year of working tirelessly to maintain our commitment to combat poverty in our community through advocacy, support, and comprehensive early childhood education services to vulnerable pregnant women, children, and their families. This 2024-2025 program year is significant as it is my last year as the Program Coordinator for Early Head Start. This upcoming May, I will be retiring with 21 years of service to DDIV, and am proud to hand over the baton so that the journey of service to others can continue.

We are so grateful to the staff, board, policy council, and the parents for your dedication and support of our work that continues to create positive outcomes in all of the communities we serve. With everyone's support, we continue to move forward and we Thank you!

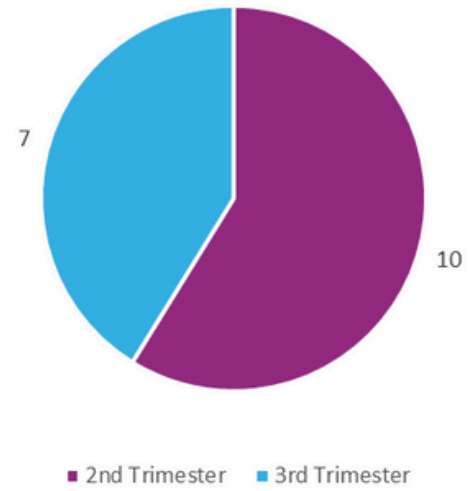
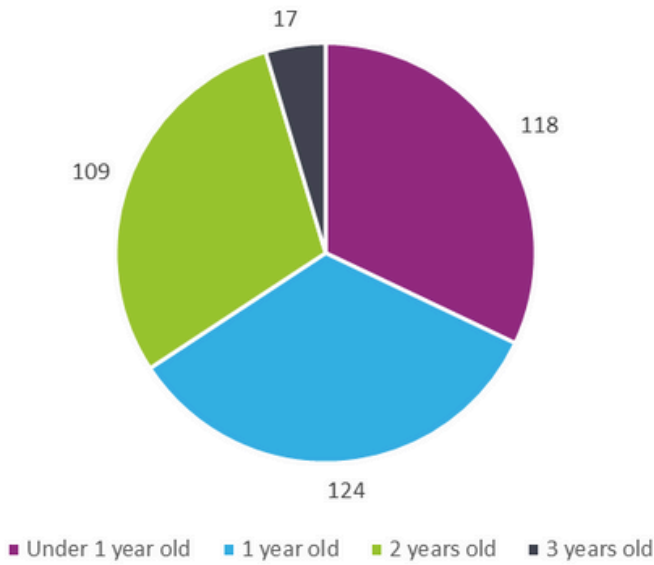
Martha Velasco
Early Head Start Program Coordinator
DDI Vantage

Alone. We can do
so little; Together,
We can do so
much.
-Helen Keller



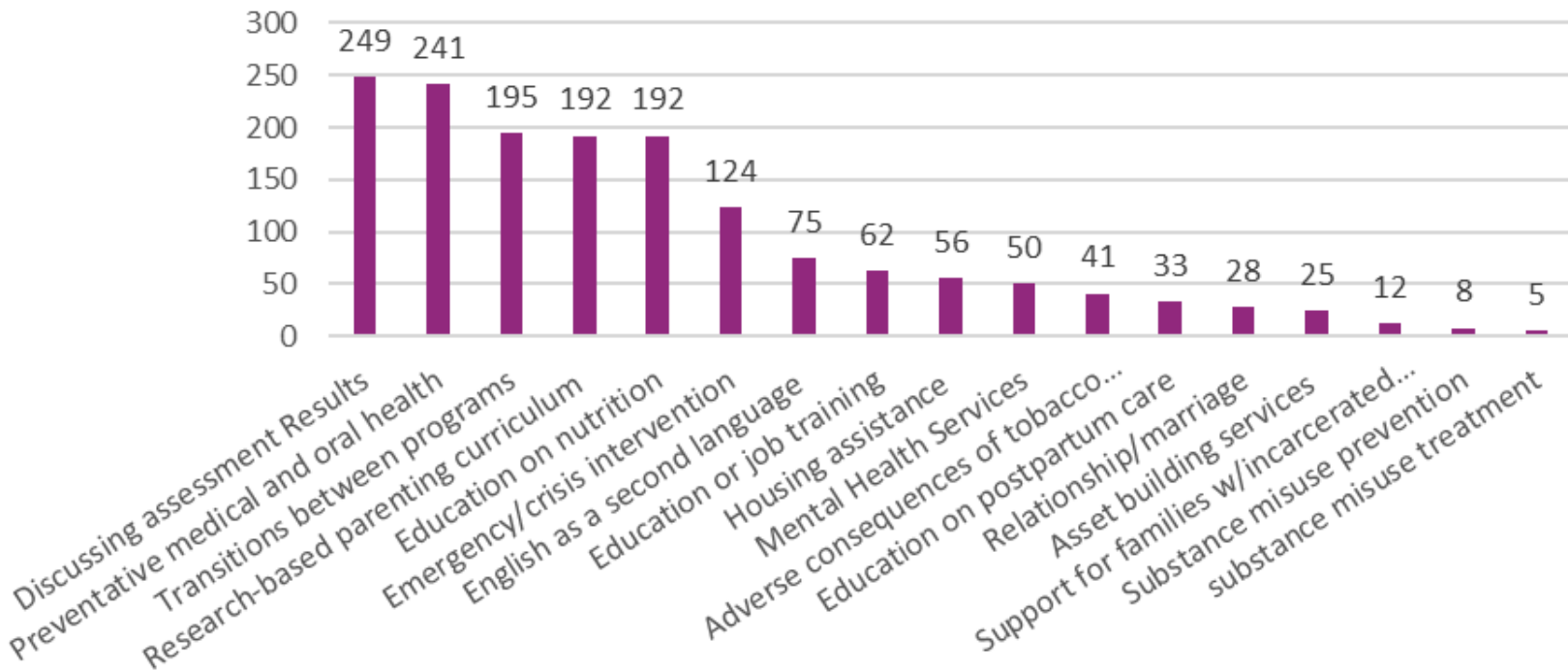
Total cumulative Enrollment=368

Enrollment of expectant mothers = 17
3 of which were high risk pregnancies



All DDI Vantage EHS families received education and social services support in 2024

*Chart graphs the number of families and areas of support



DDI Vantage Mission Statement

Empowering vulnerable children, adults and families to reach their full potential.

Previous year data showed the need to prioritize dental care for children enrolled in the EHS program. DDI Vantage EHS partnered with Healthy Smiles Dental Hygiene LLC, and Dr. David Steward, DDS to Provide dental exams, preventative dental care, and other needed dental services in easy to access DDI Vantage locations. The results have been positive.

Health Care

- Number and % of children with a Medical Home 345 (94%)
- Children who are up to date on the Early and Periodic Screening, Diagnostic and Treatment (EPSDT) Services 170 (46%) *
- Pregnant mothers with health insurance coverage 15 (88%)*
- Children with health insurance coverage 348 (95%)

Dental/ Oral Care

- Number and % of children with a Dental Home 261 (70%) *
- Number and % of children who received an oral exam by a professional 296 (80%)

Immunizations

- Children who are up to date 310 (84%)*

***Indicates increase from previous year**

The Early and Periodic Screening, Diagnostic and Treatment (EPSDT) is a program for children ages birth through twenty who qualify for Medicaid. It provides preventative medical and dental care for children enrolled in Medicaid. Medicaid ensures that each child has access to necessary check-ups.

Benefits include preventative physicals, hearing and vision screenings, mental health care, as well as access to all necessary immunizations.

EPSDT dental provides preventive care. This includes two dental examinations per year, x-rays, sealants, fluoride and necessary restoration work. [[medicaid.utah.gov](https://www.medicaid.utah.gov)]

DDI Vantage EHS educates all enrolled families on the importance of being up to date on their EPSDT by having their child attend all necessary medical and dental check-ups.



DDI Vantage EHS-CCP works to prepare children for School Readiness with the goal that children will test at age-appropriate levels in all areas of development by 36 months. The SmartTeach by Teaching Strategies assessment tool (previously Teaching Strategies Gold (TS GOLD)) provides a method for observing the development of children functioning in the birth to 36-month age range and corresponds with the Head Start Early Learning Outcomes Framework: Ages Birth to Five (ELOF). TS GOLD contains 38 research-based objectives in 10- different areas of development (social-emotional, physical, language, cognitive, literacy, mathematics, science and technology, social studies, the arts, and English language acquisition).

Assessment Instruments Aligning with Early Learning Outcomes Framework

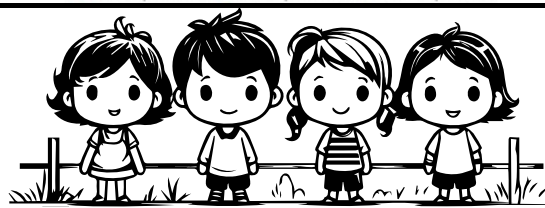
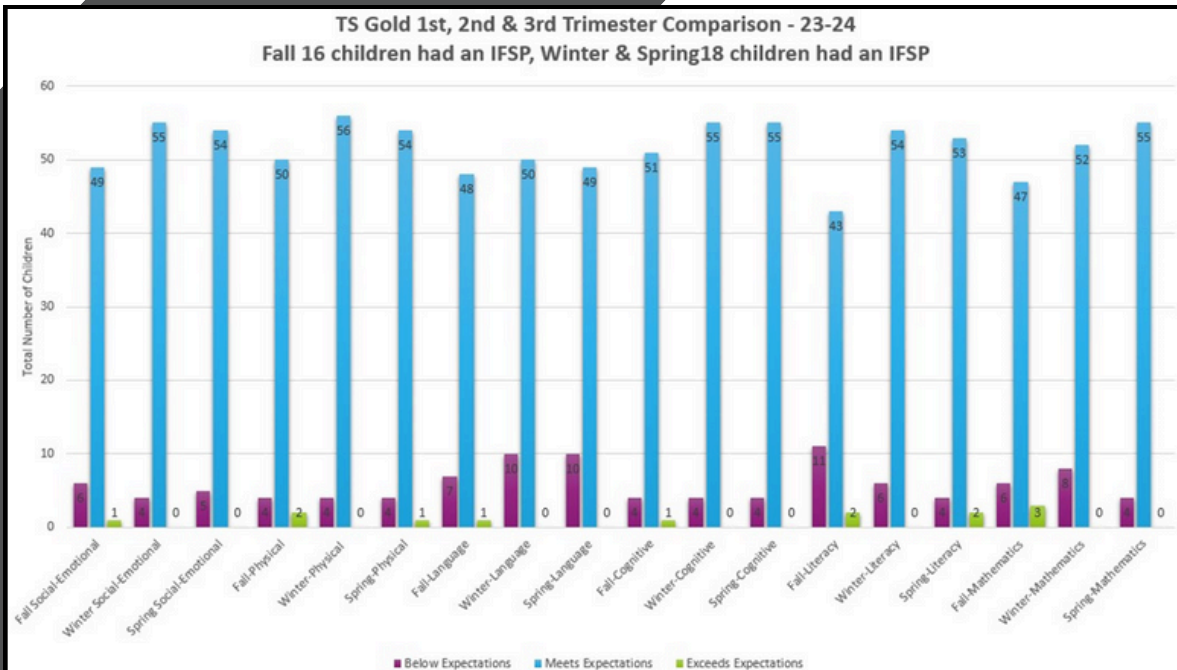
SmartTeach Domain

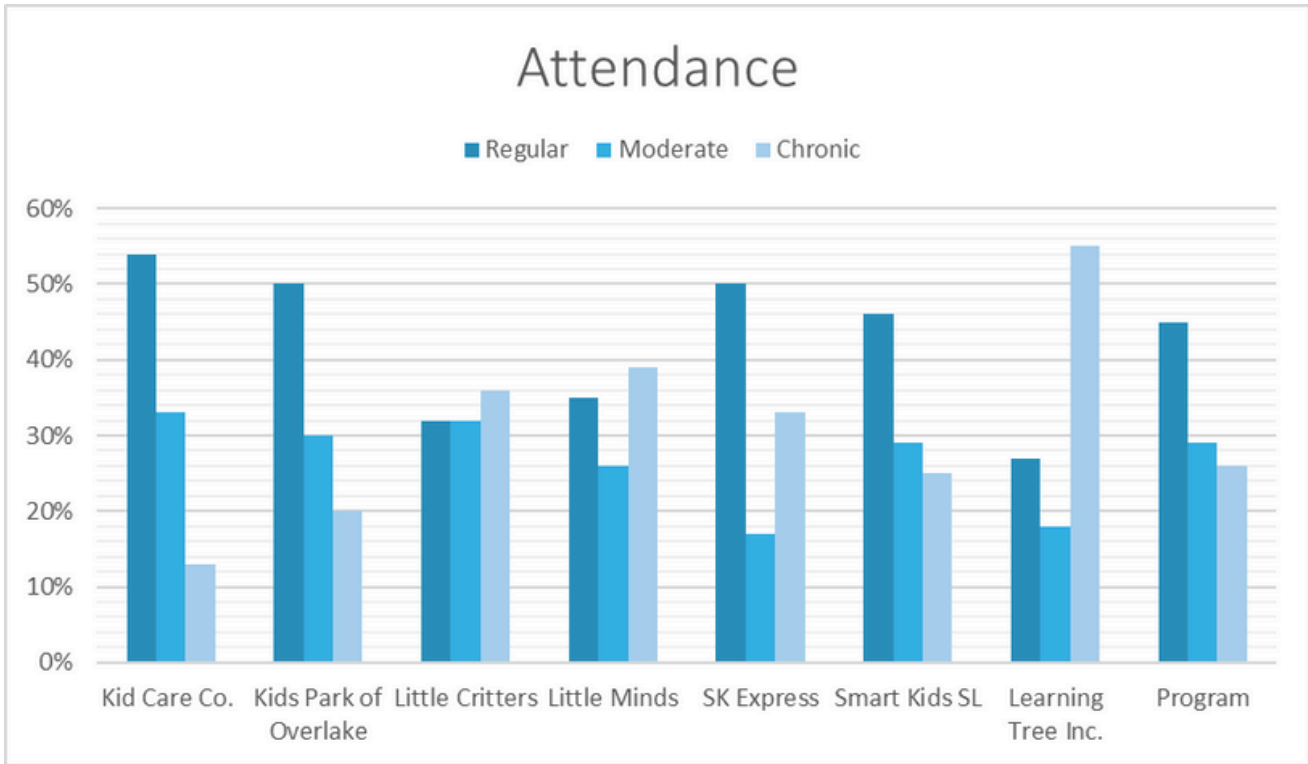
1. Physical
2. Cognitive and Mathematics
3. Language and Literacy
4. Social/Emotional

ELOF

- Physical Development and Health
- Cognition and General Knowledge
- Language and Literacy
- Social And Emotional Development

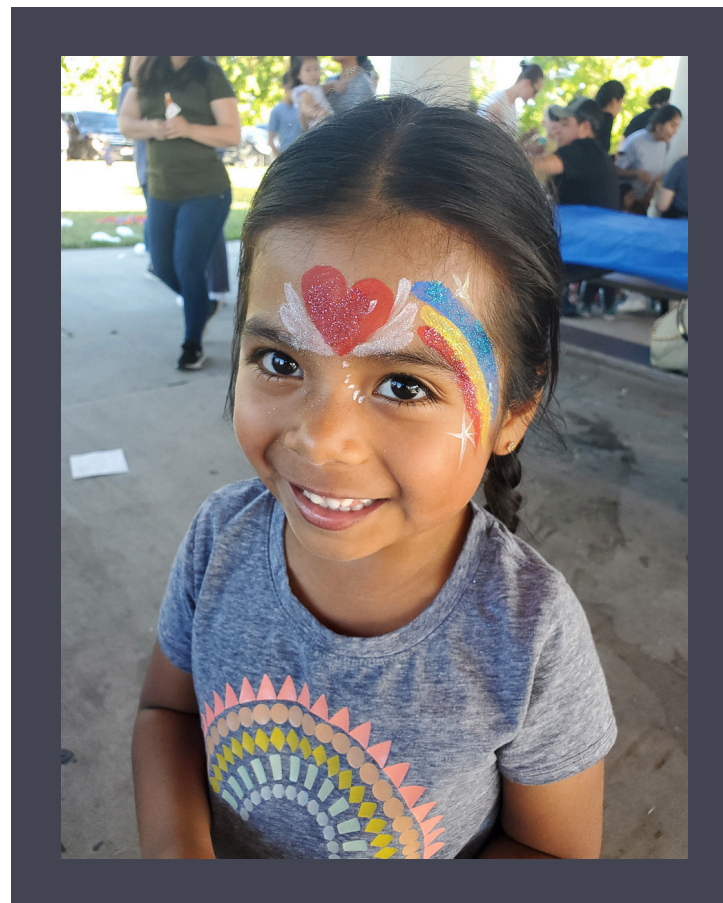
This graph summarizes the assessment results of the children enrolled from Aug. 1, 2023 to July 31, 2024, 0-3 years of age, from 7 privately-owned child care center partners. It is important to note the SmartTeach by Teaching Strategies assessment does not record children’s Math and Literacy skills until they are over 2 years old. Therefore, not all children are assessed in the two domains and the graph reflects this. The overall observation from the assessment data is that children are meeting developmental expectations and increasing their developmental skills over time.





Children from low-income families are more likely to be chronically absent in the early grades and less likely to have access to needed resources to make up for missed time in school. Establishing good early attendance habits supports children’s learning and leads to success in school and in life. [[Attendanceworks.org](https://www.attendanceworks.org)]

DDI Vantage and the Child Care Center are required to follow up on every unexplained absence within one hour of the program start time. If a child is in danger of becoming chronically absent, the DDIV Family Advocate works with the family to create an attendance improvement plan to provide support, remove barriers, and increase attendance.

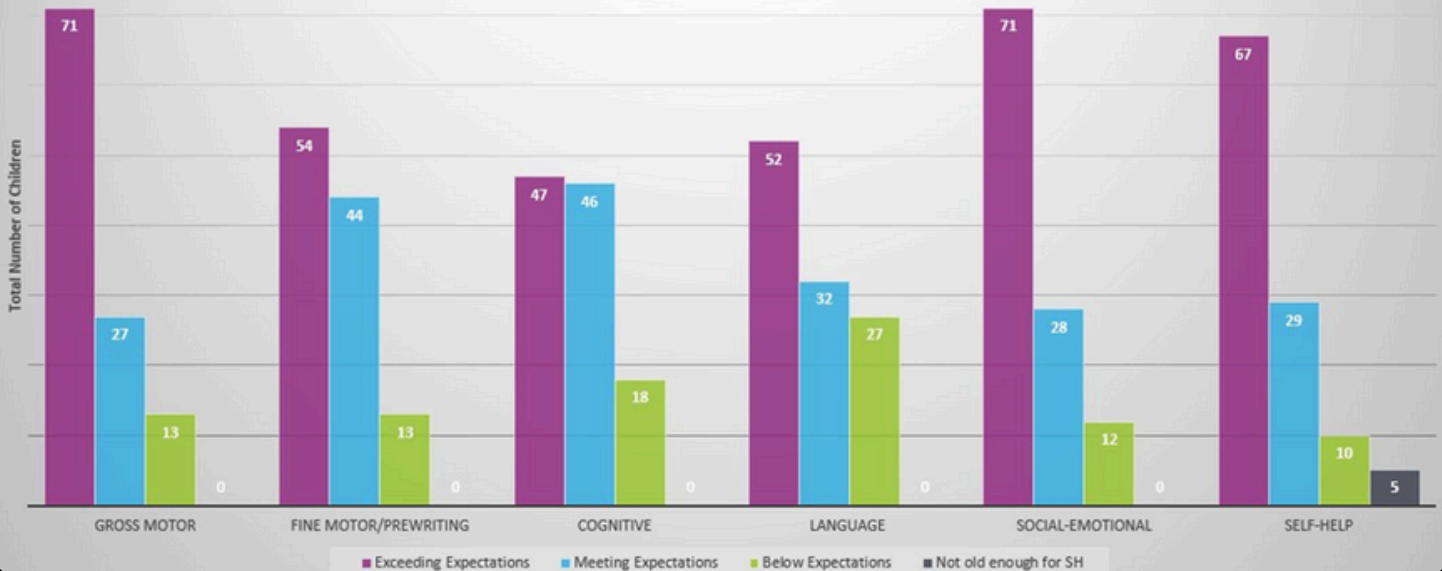


DDI Vantage EHS works to prepare children for School Readiness with the goal that children will test at age-appropriate levels in all areas of development by 36 months. The Learning Accomplishment Profile (LAP) is a comprehensive assessment tool used to track individual child growth and progress toward school readiness across the following six developmental domains: Gross Motor, Fine Motor/Pre-writing, Cognitive, Language, Social-Emotional and Self Help. It provides an ongoing, systematic method for observing the skill development of any child functioning in the birth to five-year range, including children with special needs.

The following graph shows the number of children exceeding, meeting, or below expectations for the Spring 23-24 trimester. It is important to note that children can not be assessed for Self Help skills until they are 6 months old, therefore you will see a few children on this graph that are not old enough to assess.

Follow up is provided for each child in the form of goal writing, community resources and referrals for further evaluation when needed.

All Home-based LAP Scores - Spring 23-24
111/148 Children completed an Assessment



Children are the world's most valuable resource and it's best hope for the future.

-John F. Kennedy





Fine motor



Cognitive



Gross Motor



Language & Literacy



Sensory



Self-Help



Community Events

A selection of School Readiness Socialization topics & activities



35 families turned in 240 reading cards for a total of 720 hours of reading time

115 children supported through an IFSP

DDI Vantage Early Head Start understands that parents are a child’s first and most important teacher. Enrolled families participate in opportunities to build their skills through engagement in home visits, socializations, and parenting curriculum lessons. Parents also participate in leadership and decision-making roles to ensure that DDIV EHS provides exemplary services. Their voice directly impacts the themes, activities, and direction the program takes as data reveals the program’s strengths and potential areas for growth. Many parents volunteered and provided their own books and skills to lead an activity during the socialization. Socializations provide opportunities for staff to model and parents to practice ways to engage their child in learning. Each socialization includes activities that support music and movement, developmental growth, arts and crafts, a family-style meal, and a book reading demonstration.



Results of the Annual Single Audit

The fiscal year 2024 annual single audit of DDI Vantage and affiliated programs found the agency to be compliant with all requirements of the funding entities. The report contained no findings and all expenses were reasonable, allowable and allocable, with no questioned costs, exceptions, or comments. Internal controls were found to be in place and operations across all programs were sound.

Budget	Actuals (4/30/24)
Personnel \$1,638,855.00	Personnel \$1,612,517.00
Fringe Benefits \$682,806.00	Fringe Benefits \$688,262.00
Travel (out of state) \$16,721.00	Travel (out of state) \$15,947.00
Equipment \$0.00	Equipment \$0.00
Supplies \$66,424.00	Supplies \$59,148.00
Other \$1,083,245.00	Other \$1,121,034.00
Total Direct Cost \$3,488,051.00	Total Direct Cost \$3,496,908.00
Indirect Cost \$288,700.00	Indirect Cost \$279,843.00
Total Approved Budget \$3,776,751.00	Total Approved Budget \$3,776,751.00

25% Required Non Federal Match Total needed: \$873,716.00
Total Received: \$873,716.00